



ARTICLE

Aneta Sapińska-Śliwa

AGH University of Krakow, Laboratory of Geoenergetics
ORCID: 0000-0002-2728-3413

Remigiusz Kunasz

AGH University of Krakow, Laboratory of Geoenergetics
ORCID: 0009-0000-3875-0630

Tomasz Śliwa

AGH University of Krakow, Laboratory of Geoenergetics
ORCID: 0000-0002-7005-8190
e-mail: sliwa@agh.edu.pl

ANALYSIS OF THE POTENTIAL HEATING OF SELECTED STUDENT RESIDENCES AT THE AGH UNIVERSITY OF KRAKOW USING THE EARTH'S HEAT

Date of submission:
24.11.2023

Date of acceptance:
26.12.2023

Date of publication:
29.12.2023

© 2023 Authors. This is an open access publication, which can be used, distributed, and reproduced in any medium according to the Creative Commons CC-BY 4.0 License

<https://journals.agh.edu.pl/jge>

Abstract: The aim of this study was to adapt the operating parameters of a geothermal heat pump system to the required average power needed to meet the energy for central heating and domestic hot water of selected student residences. Calculations of the average power required by the dormitories in the AGH University Student Campus were carried out, as well as modelling of the deep borehole heat exchanger for the heating load. The designed heating system for the student residences in the AGH University Student Campus using a deep borehole heat exchanger – is sufficient to cover the base heat demand for five four-storey dormitories. During the writing of the paper, the main problem was the low availability of articles on deep borehole heat exchangers. This is due to the continuous development and testing of new engineering ideas.

Deep borehole heat exchangers can be use as new boreholes or wells prepared for liquidation. Also use of closed boreholes sometimes is possible, depending on project of liquidation. The future districy heating will use low-temperature heat carrier for heating and cooling. Use borehole fields as rockmass use for heat and/or cool ,storage will be common.

Keywords: deep borehole heat exchanger, geoenergetics, geothermal, drilling

1. Introduction

Annually increasing global energy prices have fuelled the public's interest in geothermal energy, accelerating the development of efficient ways of extracting heat energy from the rock mass.

The aim of this study is to show that the Earth's heat is suitable for the efficient heating of student residences at the AGH University of Krakow. There are many possible options, including a deep borehole heat exchanger.

Geothermal is a branch of economy and science encompassing the exploration, access, exploitation (extraction and injection), transport, processing and use of geothermal energy (whose source is the planet Earth) or the Earth's heat (contained in rock mass, solar and anthropogenic) [1].

Geothermal energy, extracted from rocks and groundwater, is most generally characterised by a division into two types: high-temperature, medium-temperature and low-temperature. High-temperature geothermal offers the possibility of using the Earth's heat to generate electricity. The means of heat transfer are high-temperature fluids that fill the pore space of the permeable layer. Medium-temperature thermal waters are used for direct heating in heating systems and for power generation in binary power plants [2]. Sources of geothermal energy that have temperatures low enough to recover thermal energy without the use of heat pumps are known as low-temperature geothermal [3].

The most effective method of making heat available is thermal water exploitation, where the heat carrier (water) is brought to the surface through an exploitation borehole that delivers the fluid through extraction pipes or a full section. This is a single-hole operation discharging the used water into surface watercourses. A system that includes a single borehole is only used when aquifer recharge conditions are very good. When geological conditions do not allow the rapid regeneration of water resources, a single-hole exploitation and absorption system is used. The cooled water is injected through an annular space into the absorption layer and the fluid is extracted from the geothermal layer through extraction pipes. Another method is the two-well extraction-absorption system (geothermal doublet), which involves injecting a reduced-temperature heat carrier into the geothermal layer via an absorption well. The extraction of high-temperature geothermal water is carried out through an exploitation well [2].

The Hot Dry Rock (HDR) heat extraction system involves extracting heat from dry volcanic, deep-sea and metamorphic rocks. Deposits of such rocks are found at depths of 3–6 km (excluding volcanic zones). The exploitation of this system is based on the circulation of water forced by pumps in a permeable geological reservoir or one where an artificial fracture zone has been created. Water is transported through a bore-

hole to the fractured high-temperature rocks. A second borehole brings hot steam to the surface [2].

Borehole heat exchangers are an installation that allows heat to be transported from or to the rock mass. They are used in many countries around the world on an ever-increasing scale for heating and cooling systems that operate in conjunction with heat pumps. The system, in which either water or a glycol solution circulates, is closed. There are different types of design (Figs. 1–5):

- single U-tube,

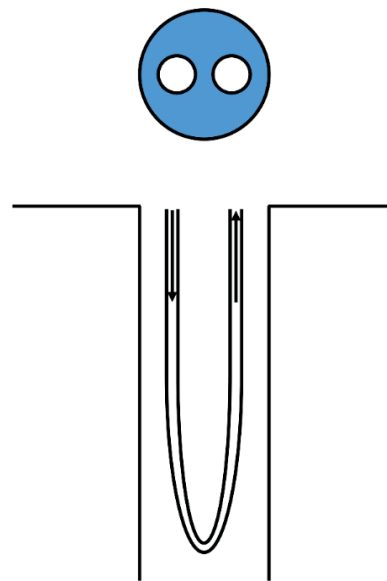


Fig. 1. Single U-tube

- double U-tube,

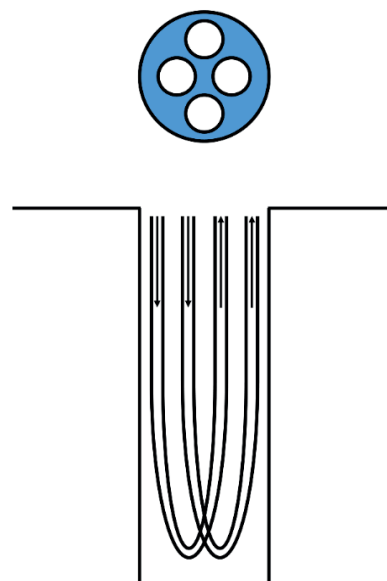


Fig. 2. Double U-tube

- coaxial system,

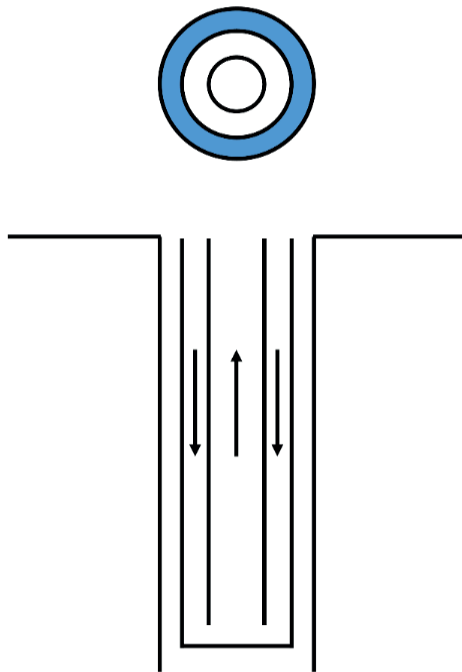


Fig. 3. Coaxial system

- 3-tube system (3 × identical diameter),

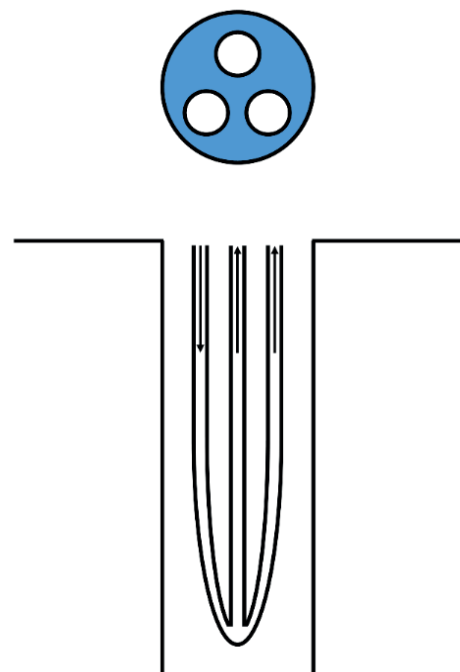


Fig. 5. 3-tube system (3 × identical diameter)

- 3-tube system (1 × larger diameter, 2 × smaller diameter),

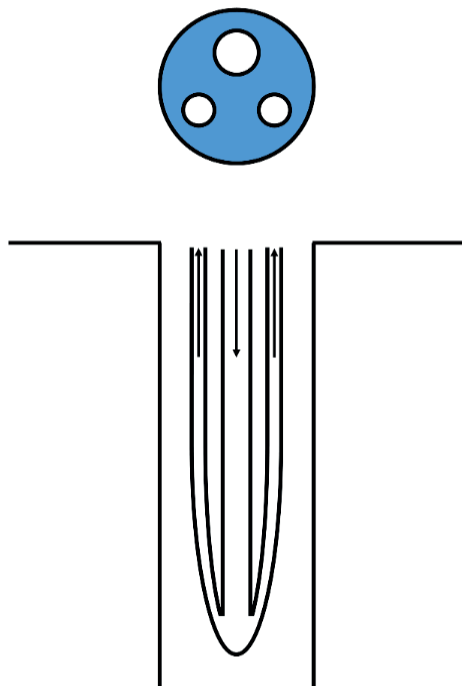


Fig. 4. 3-tube system (1 × larger diameter, 2 × smaller diameter)

The U-tube material is polyethylene (PE) due to its high thermal conductivity coefficient. The centric system consists of two tubes: an outer tube (a material with a high thermal conductivity coefficient) and an inner tube (a material with a low thermal conductivity coefficient). U-tubes are typically used up to a depth of 150 m, deeper than that at which a centric design is used [4]. The drilling depth of a borehole heat exchanger is related to both geological conditions and cost. Closely related to the geology is the drilling method employed. When drilling in rocks of lower hardness, the rotary mud method is used. On the other hand, when drilling through harder strata, the percussion rotary method is a much more efficient and easier drilling method. Unfortunately, it is significantly more expensive [5]. Borehole heat exchangers have a number of advantages, which include the following [6]:

- minimal environmental impact,
- the possibility of operating as a heat and cooling source,
- very good long-term reliability of the system,
- significant energy savings during cooling compared with traditional methods.

There is a lot of global interest in borehole heat exchangers today. The vast majority of these are shallow boreholes with depths of tens to hundreds of metres. The use of deep boreholes (2 000–4 000 m) for the installation

of deep borehole heat exchangers (DBHE) makes it possible to obtain higher working fluid temperatures and more energy [7]. In contrast to shallow installations, a deep borehole heat exchanger is only able to convert energy for heating purposes. Due to the high rock temperatures in the rock mass, it is impossible to use such exchangers for cooling purposes. Given the high costs of drilling boreholes, existing boreholes that were drilled for other purposes, such as negative exploration boreholes or depleted oil wells, are usually considered for investment [4].

2. Methodology

Average power (P):

$$P = \frac{Q}{t} \quad (1)$$

where:

Q – heat supplied (thermal energy consumption) [J],
 t – time at which the heat was delivered [s].

Calculations of the effective thermal parameters of the rocks along with the average temperature in the borehole have been made below.

Weighted average thermal conductivity of the rocks:

$$\lambda_{av} = \frac{\lambda_1 \cdot h_1 + \lambda_2 \cdot h_2 + \dots + \lambda_i \cdot h_i}{h_1 + h_2 + \dots + h_i} \left[\frac{W}{m \cdot K} \right] \quad (2)$$

where:

λ_i – thermal conductivity of a given rock layer [$W \cdot m^{-1} \cdot K^{-1}$],
 h_i – thickness of given rock layer [m].

Weighted average of rock heat capacity:

$$c_{vav} = \frac{c_{v1} \cdot h_1 + c_{v2} \cdot h_2 + \dots + c_{vi} \cdot h_i}{h_1 + h_2 + \dots + h_i} \left[\frac{MJ}{m^3 \cdot K} \right] \quad (3)$$

where:

c_{vi} – heat capacity of a given rock layer [$MJ \cdot m^{-3} \cdot K^{-1}$],
 h_i – thickness of given rock layer [m].

Average temperature in the borehole:

$$T_{av} = \frac{T_0 + T_{3000m}}{2} \quad [^{\circ}C] \quad (4)$$

$$T_{3000m} = T_0 + G \cdot (H - h_i) \quad [^{\circ}C] \quad (5)$$

where:

T_0 – average annual temperature at ground level in Krakow – $8.6^{\circ}C$,

G – geothermal gradient – $3^{\circ}C/100m$,

H – depth of borehole – $3000m$,

h_0 – depth of periodic heat penetration – $15m$.

For mathematical modelling and operational forecasting, data is still needed on:

- The coaxial exchanger pipe system will be installed in a vertical borehole with a depth $3000m$.
- The weighted average (after thickness) thermal conductivity of the rock is, $\lambda = 2.621 W \cdot m^{-1} \cdot K^{-1}$.
- The weighted average (after thickness) volumetric heat capacity is, $c_v = 2.312 MJ \cdot m^{-3} \cdot K^{-1}$.
- The average temperature in the borehole is, $T = 53.375^{\circ}C$.
- Heat carrier parameters:
 - water at a temperature, $T = 10^{\circ}C$, as the heat carrier in the system,
 - thermal conductivity: $0.582 W \cdot m^{-1} \cdot K^{-1}$,
 - specific heat: $4192 J \cdot kg^{-1} \cdot K^{-1}$,
 - density: $999.8 kg \cdot m^{-3}$,
 - viscosity: $0.001308 kg \cdot m^{-1} \cdot s^{-1}$,
 - freezing point: $0^{\circ}C$.
- Inner pipe parameters:
 - outer diameter: $114.3mm$,
 - wall thickness: $12.7mm$,
 - thermal conductivity: $0.02 W \cdot m^{-1} \cdot K^{-1}$.
- Outer pipe parameters:
 - outer diameter: $177.8mm$,
 - wall thickness: $11.51mm$,
 - thermal conductivity: $50 W \cdot m^{-1} \cdot K^{-1}$.
- Heat carrier flow rate, $Q = 3.33 dm^3 \cdot s^{-1}$.
- Thermal conductivity of the sealing slurry, $\lambda = 1.2 W \cdot m^{-1} \cdot K^{-1}$.
- Thermal conductivity of vacuum insulated tubing (VIT), $\lambda = 0.02 W \cdot m^{-1} \cdot K^{-1}$.
- Heat pump coefficient of performance, $COP = 4$.
- Base load (central heating + domestic hot water) monthly for one four-storey student house, as an average of student houses 15, 16 and 17 in 2017 due to the highest consumption from 2016 to 2020.

Mathematical model is based on the commercial software Earth Energy Designer (EEE ver. 4.1). In cylindrical coordinates, the ground temperature fulfills the heat conduction equation:

$$\frac{1}{\alpha} \frac{\partial T}{\partial t} = \frac{\partial^2 T}{\partial r^2} + \frac{1}{r} \frac{\partial T}{\partial r} + \frac{\partial^2 T}{\partial x^2}$$

Both the beginning state under the ground and the boundary condition at the Earth's surface are:

$$T(r, 0, t) = T_{ON}$$

$$T(r, x, 0) = T_{ON}$$

Particular consideration must be given to the boundary conditions at the borehole wall. Throughout the borehole's length, the temperature remains constant:

$$T(r_b, z, t) = T_b(t)$$

$$D < x < D + H$$

The heat extraction rate $q(t)$ is given by:

$$q(t) = \frac{1}{H} \int_D^{D+H} 2\pi r \lambda \frac{\partial T}{\partial r}$$

For the entire boundary condition, $T_b(t)$ or $q(t)$ might be prescribed.

Software works with use methodology of g-function, as quasi numerical solution of multi well field. For described example it is not used. The analysis covers one borehole heat extraction/injection. So the module of g-function is not necessary. EED4.1 based on multipoles method – a method from the group of superposition methods

The software/model has limitations, the most important being the groundwater flow rate in watered layers. This can be improved by making long-time thermal response tests [8].

3. Calculation

The necessary calculations for the power required by the student part of the AGH University Student

Campus residences and the thermal parameters of the rocks present in the lithological section at the project site are included below.

3.1. Calculation of the average power required by the AGH University Student Campus residences

On the basis of the data on thermal energy consumption (central heating and domestic hot water) from 2016 to 2020 made available by the AGH University Student Campus management, the average power required by the student residences was calculated.

Example: January 2017 – DS 7 (central heating + domestic hot water).

$$P = (364 \cdot 10^9 \text{ J}) / (2678400 \text{ s}) = 135\,902.031 \text{ W} \\ = 135.902 \text{ kW}$$

The colours, from dark red to dark green, indicate the increasing average power (Tab. 1) and heat consumption (Tab. 2) of the individual student residence in a given year.

Table 1. Average power required by AGH student residences in 2016–2020 (source: own analysis based on AGH University data), DS and ALFA DS – students dormitories

Student dormitory	Average power [kW]				
	2016	2017	2018	2019	2020
DS 1 “Olimp”	172.220	145.548	126.427	137.620	104.148
DS 2 “Babilon”	157.072	148.592	141.299	148.846	113.685
DS 3 “Akropol”	149.672	181.443	169.267	158.644	130.857
DS 4	27.575	39.859	61.739	67.764	49.870
DS 5	47.055	48.104	44.394	45.408	39.845
DS 6	58.629	60.312	53.526	57.236	43.355
DS 7	62.898	71.759	65.576	57.204	51.577
DS 8	60.021	73.503	68.715	57.585	48.194
DS 9	61.412	62.310	57.046	58.219	47.877
DS 10	59.546	56.380	50.736	49.784	25.330
DS 11	59.957	57.236	54.509	52.765	29.157
DS 12	62.139	62.627	18.899	44.203	35.576
DS 13	63.816	65.290	64.498	43.791	14.325
DS 14 “Kapitol”	184.142	174.689	172.913	167.523	139.490
DS 15	63.816	67.352	41.254	27.841	38.485
DS 16	66.187	65.703	62.722	61.866	54.107
DS 17	51.799	55.778	49.721	48.706	39.213
DS 18	70.994	25.051	63.356	62.690	63.879
DS 19	49.395	54.192	49.689	53.050	47.877
“Alfa”	233.505	265.791	274.575	289.384	230.912
Total	1 761.852	1 781.520	1 690.861	1 690.132	1 347.760

The Table 2 shows the heat consumption of student residences 15, 16 and 17 from 2016 to 2020, the analysed buildings are underlined.

Figure 6 provides a summary of the average annual power consumed by all student residences at the AGH University Student Campus between 2016 and 2020.

Table 2. Thermal energy consumption in GJ (central heating + domestic hot water) in student residences 15, 16, 17 in 2016–2020 (source: data of AGH University of Krakow)

Month	2016			2017			2018			2019			2020		
	Student residence number														
	15	16	17	15	16	17	15	16	17	15	16	17	15	16	17
January	360	331	275	360	348	306	338	315	266	0	395	327	185	259	211
February	243	234	202	278	271	248	355	334	277	0	229	184	227	214	161
March	284	277	223	256	248	199	296	291	249	0	211	168	101	215	187
April	176	183	135	203	198	145	121	155	111	121	202	146	114	158	99
May	110	181	101	145	161	120	76	114	85	96	137	99	71	48	50
June	75	84	65	71	95	68	55	77	58	68	73	51	38	55	40
July	24	36	34	34	34	43	55	46	34	75	38	38	29	50	23
August	27	32	35	39	31	41	5	22	16	49	60	30	21	52	0
September	22	32	17	45	42	50	0	37	19	32	44	27	32	62	11
October	159	179	123	164	166	125	0	183	119	124	80	102	112	210	123
November	243	245	195	296	266	230	0	219	178	132	196	136	132	175	148
December	295	279	233	233	212	184	0	185	156	181	286	228	155	213	187

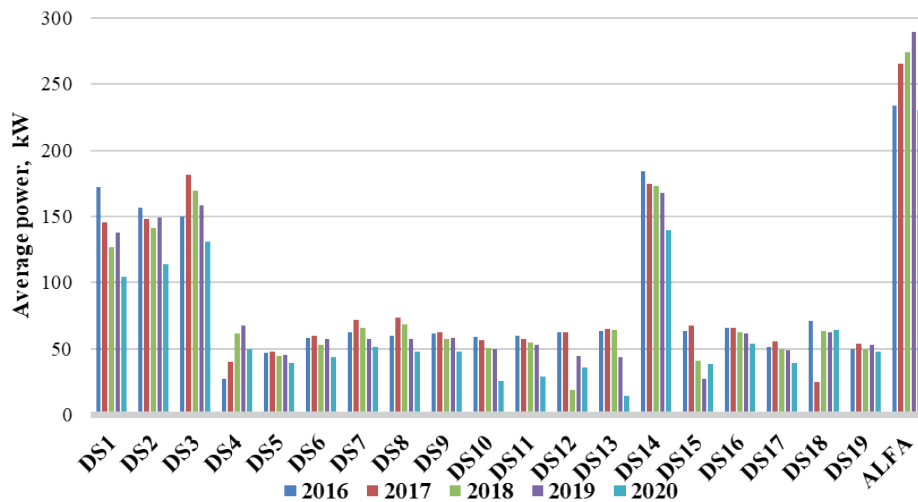


Fig. 6. Average annual power consumed in AGH student campus residences between 2016 and 2020, DS and ALFA – students dormitories

3.2. Calculation of rock thermal parameters and average temperature in the borehole

Table 3 shows the different layers present in the rock mass along with their thickness and thermal parameters.

$$\lambda_{av} = 2.621 \frac{W}{m \cdot K}$$

$$c_{v_{av}} = 2.312 \frac{MJ}{m^3 \cdot K}$$

$$T_{3000m} = 98.15^\circ C$$

$$T_{av} = 53.375^\circ C$$

Table 3. Lithological profile of the strata with thermal parameters

Layer	Depth of layer [m]		Thermal conductivity λ [$\text{W}\cdot\text{m}^{-1}\cdot\text{K}^{-1}$]	Specific heat capacity c_v [$\text{MJ}\cdot\text{m}^{-3}\cdot\text{K}^{-1}$]
	Start	End		
Siltstones, shales	0	172	2.20	2.27
Grey zailone sandstones	172	327	2.16	2.00
Diabase	327	423	2.80	2.22
Fine-grained grey sandstones	423	498	2.22	2.09
Shales, siltstones	498	764	2.20	2.27
Fine-grained sandstones zailone	764	929	2.30	1.70
Dark grey shales, dark grey siltstones	929	1 160	2.20	2.22
Grey and dark grey limestones	1 160	1 452	2.80	2.35
Dolomitic limestones, dolomites 30/70	1 452	1 684	2.55	2.30
Beige and grey-beige dolomites	1 684	1 888	3.20	2.50
Grey and dark grey limestones, dolomitic limestones 10/90	1 888	2 349	2.38	2.41
Beige and grey-beige dolomites	2 349	3 000	3.20	2.50

3.3. Assumptions for the DBHE project

Below are the assumptions, i.e. the parameters with the values that were used to simulate the operation of the exchanger for up to 25 years of operation.

- The coaxial exchanger pipe system will be installed in a vertical borehole with a depth, $H = 3\,000$ m.
- The weighted average (after thickness) thermal conductivity of the rock is, $\lambda = 2.621 \text{ W}\cdot\text{m}^{-1}\cdot\text{K}^{-1}$.
- The weighted average (after thickness) volumetric heat capacity is, $c_v = 2.312 \text{ MJ}\cdot\text{m}^{-3}\cdot\text{K}^{-1}$.
- The average temperature in the borehole is, $T = 53.375^\circ\text{C}$.
- Heat carrier parameters:
 - water at a temperature, $T = 10^\circ\text{C}$, as the heat carrier in the system,
 - thermal conductivity: $0.582 \text{ W}\cdot\text{m}^{-1}\cdot\text{K}^{-1}$,
 - specific heat: $4192 \text{ J}\cdot\text{kg}^{-1}\cdot\text{K}^{-1}$,
 - density: $999.8 \text{ kg}\cdot\text{m}^{-3}$,
 - viscosity: $0.001308 \text{ kg}\cdot\text{m}^{-1}\cdot\text{s}^{-1}$,
 - freezing point: 0°C .
- Inner pipe parameters:
 - outer diameter: 114.3 mm,
 - wall thickness: 12.7 mm,
 - thermal conductivity: $0.02 \text{ W}\cdot\text{m}^{-1}\cdot\text{K}^{-1}$.
- Outer pipe parameters:
 - outer diameter: 177.8 mm,
 - wall thickness: 11.51 mm,
 - thermal conductivity: $50 \text{ W}\cdot\text{m}^{-1}\cdot\text{K}^{-1}$.
- Heat carrier flow rate, $Q = 3.33 \text{ dm}^3\cdot\text{s}^{-1}$.

- Thermal conductivity of the sealing slurry, $\lambda = 1.2 \text{ W}\cdot\text{m}^{-1}\cdot\text{K}^{-1}$.
- Thermal conductivity of vacuum insulated tubing (VIT), $\lambda = 0.02 \text{ W}\cdot\text{m}^{-1}\cdot\text{K}^{-1}$.
- Heat pump coefficient of performance, $\text{COP} = 4$.
- Base load (central heating + domestic hot water) monthly for one four-storey student house, as an average of student houses 15, 16 and 17 in 2017 due to the highest consumption from 2016 to 2020.

3.4. Simulation of deep borehole heat exchanger operation

Simulations for the loading of the deep borehole heat exchanger were carried out in the “Earth Energy Designer” (EED) software for different variants:

- one four-storey student house,
- three four-storey student residences,
- five four-storey student residences,
- six four-storey student residences.

For the simulation of deep heat exchangers in the EED programme, the temperature at the ground surface is equal to the average temperature in the borehole.

The load for one student house is shown in Figure 7, Figure 8 shows the load for three student houses, Figure 9 shows the load for five student houses and Figure 10 shows the load for six student houses.

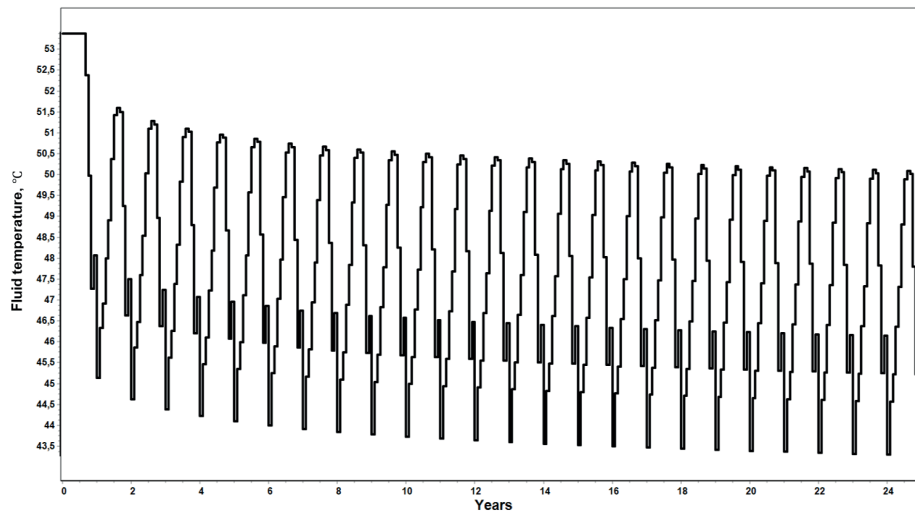


Fig. 7. Heat carrier temperature as a function of simulation time for one four-storey dormitory

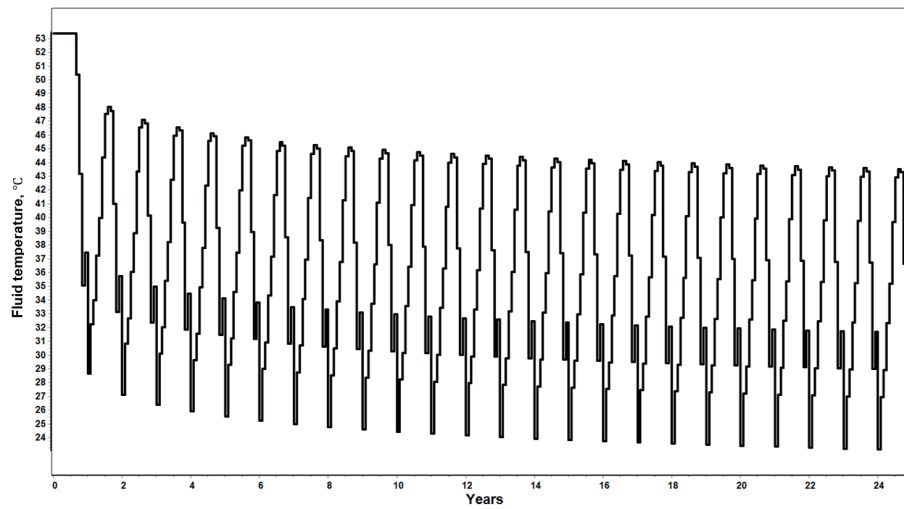


Fig. 8. Heat carrier temperature depending on simulation time for three four-storey dormitories

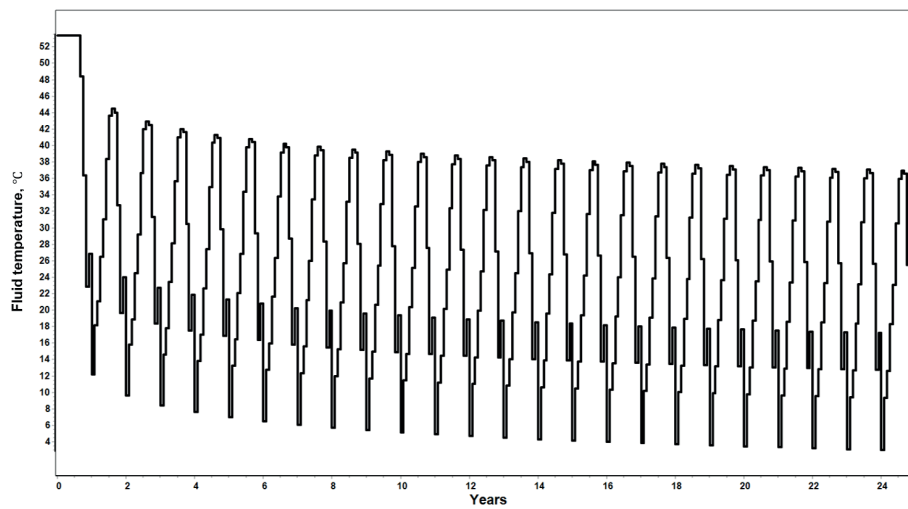


Fig. 9. Heat carrier temperature depending on simulation time for five four-storey dormitories

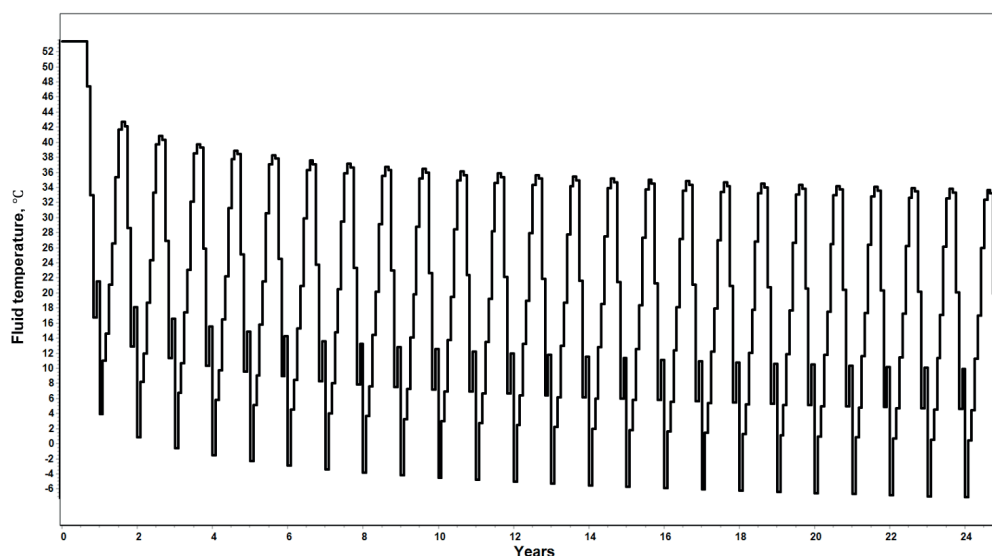


Fig. 10. Heat carrier temperature as a function of simulation time for six four-storey dormitories

4. Conclusions

1. The Alpha, Acropolis, Babylon, and Olympus student residences consume the most heat energy per year. This is shown in Figure 6 as heating power.
2. All four-storey student residences in the AGH University Student Campus consume a similar amount of heat energy per year, which covers interior (central) heating and domestic warm water.
3. The deep borehole heat exchanger cooperating with the geothermal heat pump will allow for the heating energy needs of the five four-storey dormitories in the AGH University Student Campus to be satisfied. A single dormitory can be heated without heat pump.
4. It may be possible to heat single four-storey student house without a heat pump due to the high temperature of the heat carrier of over 43°C in year 25 of the simulation, during the peak heating load. When the temperature of heating system after thermomodernization drops, more dormitories could work without heat pumps. Another solution is domestic warm water heating for more dormitories, but the data of heat demand were not separated for d.w.w and central heating.
5. Six student residences cannot be heated due to the temperature of the heat carrier dropping below the freezing point. Already in the third year of operation, a reduction in the average

temperature of the heat carrier in the borehole heat exchanger below 0°C can be observed (Fig. 10). In such a system, heat exploitation is possible, but with the use of an aqueous solution of glycole as heat carrier. The low thermal conductivity of the heat exchanger inner pipe is very important for isolating the inflowing heat carrier from the outflowing heat carrier, especially at low depths near the ground surface. Because of the model limitations, the energy output of DBHE may be higher if the flow of underground water is present.

6. In the near future, the authors suggest working on the mathematical method with groundwater flow. However, this is limited by the need for geological data before drilling.

The replacement of traditional energy sources in district heating networks by geothermal sources should be carried out in conjunction with the thermal modernisation of buildings. As part of this thermomodernisation, attention should not only be paid to changes in power and heat demand, but also to the parameters of the heating system. Any reduction in the heating system supply temperature will facilitate an increase in the load on geothermal sources, including geothermal heat pumps.

Acknowledgements: The work was created under the subsidy of the Department of Drilling and Geoengineering No. 16.16.190.779 (Faculty of Drilling, Oil and Gas AGH University of Krakow).

References

- [1] Śliwa T.: *Grawitacyjne otworowe magazyny energii – potencjał na przykładzie złoża Przemysł*. 13. Polski Kongres Naftowców i Gazowników, Bóbrka, 2–3 czerwca 2022, <https://www.sitpnig.pl/single-post/13-polski-kongres-naftowc%C3%B3w-i-gazownik%C3%B3w-b%C3%9Brka-2-3-czerwca-2022-r>
- [2] Gonet A. (red.): *Metodyka identyfikacji potencjału cieplnego górotworu wraz z technologią wykonywania i eksploatacji otworowych wymienników ciepła*. Wydawnictwa AGH, Kraków 2011.
- [3] Rzyżyński G., Majer E.: *Geotermia niskotemperaturowa – informacja geologiczna i procedury prawne*. Przegląd Geologiczny, vol. 63, nr 12/1, 2015, pp. 1388–1396.
- [4] Śliwa T. (red.): *Zintegrowany system otworowych wymienników ciepła i kolektorów słonecznych*. Wydawnictwa AGH, Kraków 2012.
- [5] Śliwa T.: *Badania podziemnego magazynowania ciepła za pomocą kolektorów słonecznych i wymienników otworowych*. Wydawnictwa AGH, Kraków 2012.
- [6] Wolszyn J.: *Badania wpływu rozmieszczenia wymienników na efektywność podziemnych magazynów energii*. Akademia Górniczo-Hutnicza/AGH University of Krakow, Kraków 2014 [doctoral thesis].
- [7] Śliwa T., Wolan M., Mazur C., Wójtowicz T.: *Adaptacja istniejących i zlikwidowanych odwiertów na głębokie otworowe wymienniki ciepła. Technologia wykonania końcowego wyposażenia otworu do pozyskiwania ciepła z górotworu*. VII Ogólnopolski Kongres Geotermalny/7th Polish Geothermal Congress: 28–30 IX 2021 [unpublished conference paper].
- [8] Eskilson P.: *Thermal analysis of heat extraction boreholes*. University of Lund, Sweden, Lund 1987 [doctoral thesis].